

What is a device driver?

Driver is a small program that recognizes connected devices and gives access to them. No any hardware device can function without a driver. Sound, video, web cam, keyboard, mouse cannot be recognized without it, hence they will not be able to operate without it.

Connecting the glasses to the computer via USB.

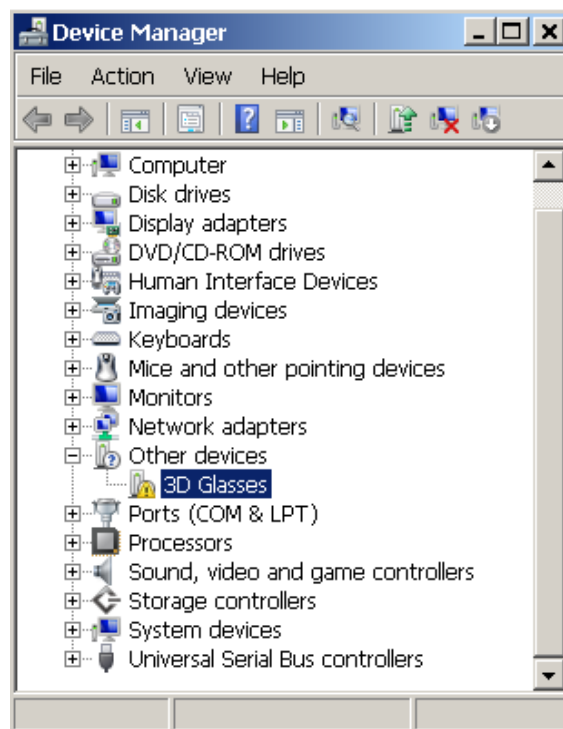
This type of connection is used when additional functionality is needed:

1. Glasses in 3D mode without use radio frequency channel.
2. Renewal of build-in program supply for the glasses from the PC.
3. Glasses program supply fine tuning via PC.

If Bluetooth RF provides necessary functionality, the driver is not required and does not need to be installed.

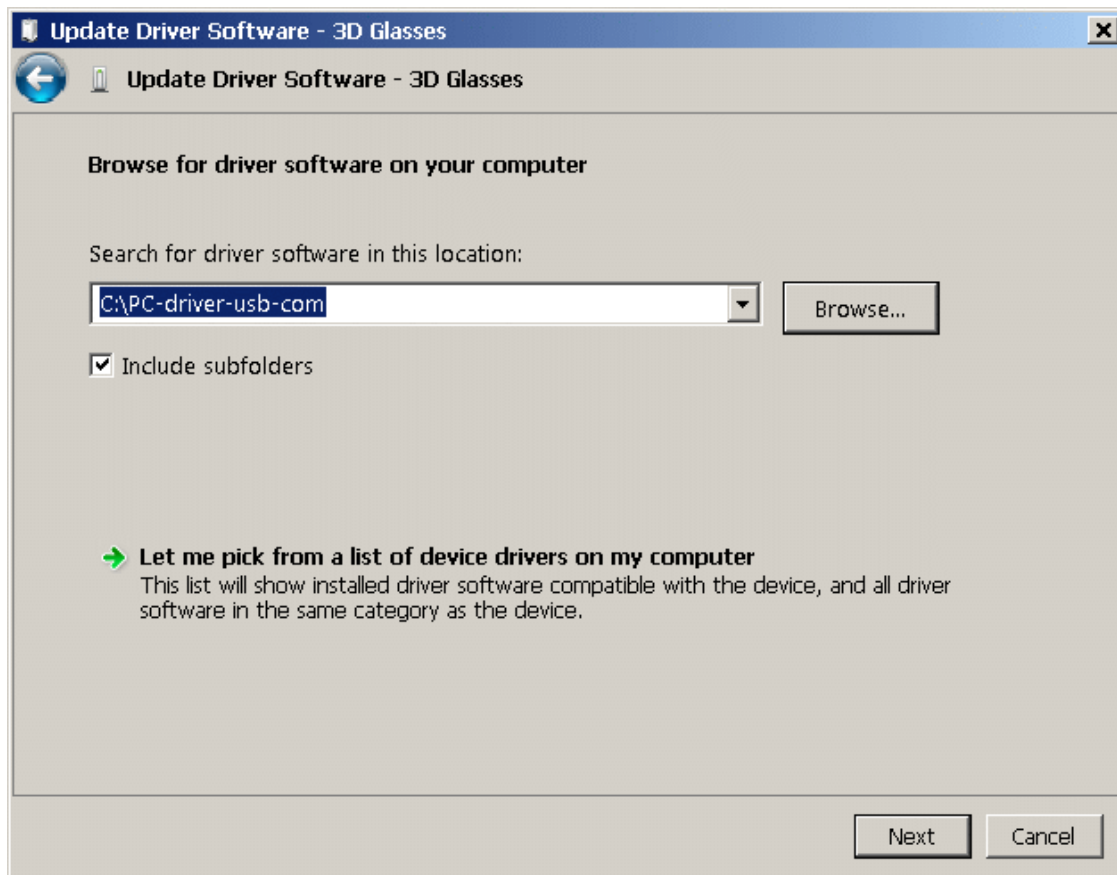
3D glasses Windows USB driver Installation process.

1. Download a zip file containing the driver from the Technical Support page.
2. Unarchive the file and place it in a location convenient for use, i.e. folder on disk C:
3. Use micro USB cable to connect glasses to the computer and make sure the red light is on (on the glasses) and Windows started searching for the necessary driver.
4. Wait for the system to finish an automatic search for the driver, and then open Settings:
Start Button-Control Panel-Settings-Action-Renew configuration.
5. Look for a device marked with a yellow exclamation point named “3D Glasses”.
It can be in a folder “Other devices”.

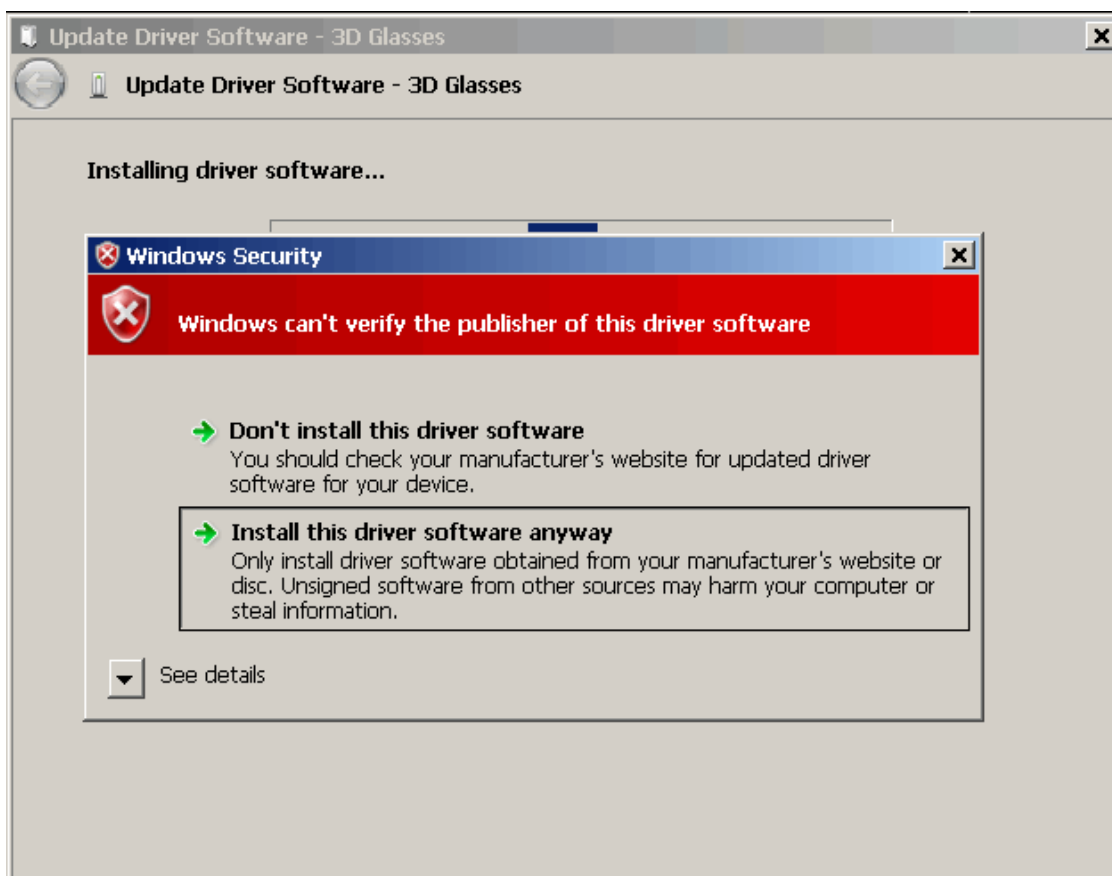


6. Click right hand side of the mouse and choose option “3D Glasses”,
then click the left hand side of the mouse and choose a menu item” Refresh drivers...”

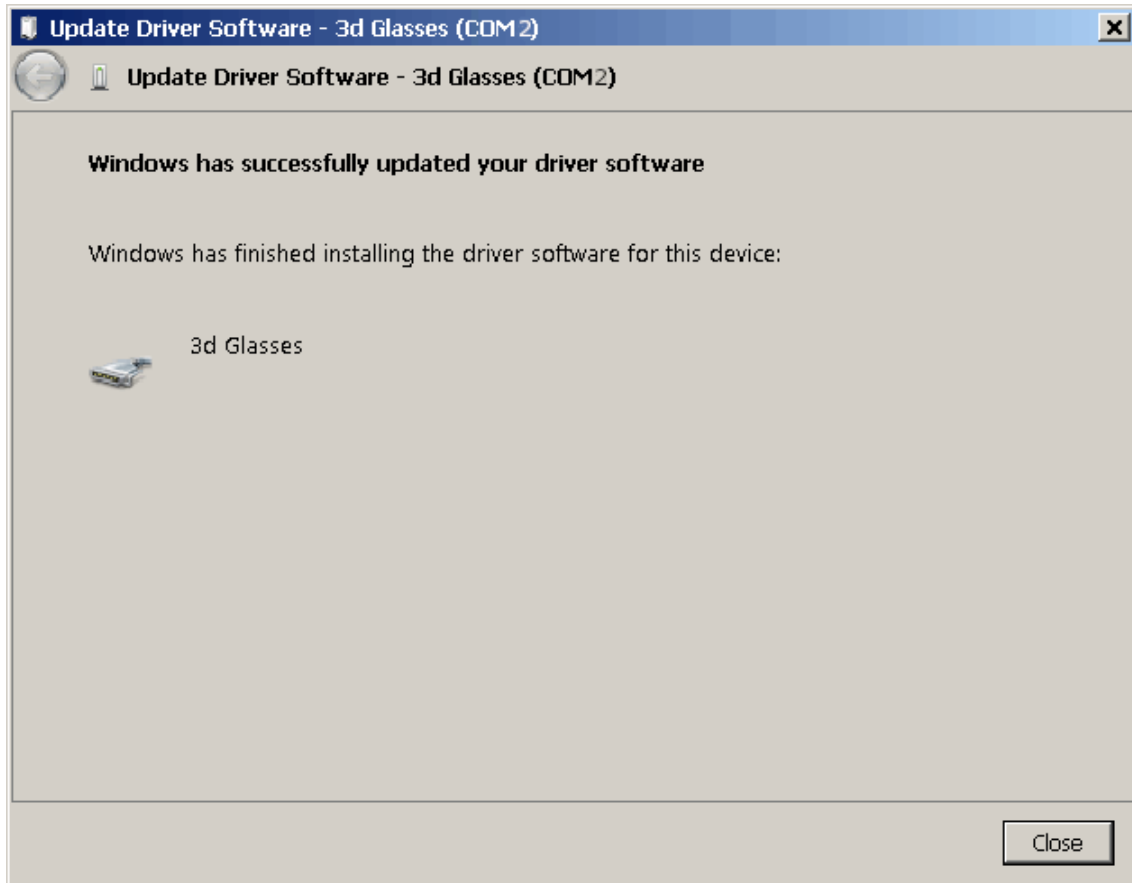
7. Then press the “Search and Manual Driver Installation” button and then by clicking the button “Browse”,
select the file with unarchived and saved driver files.



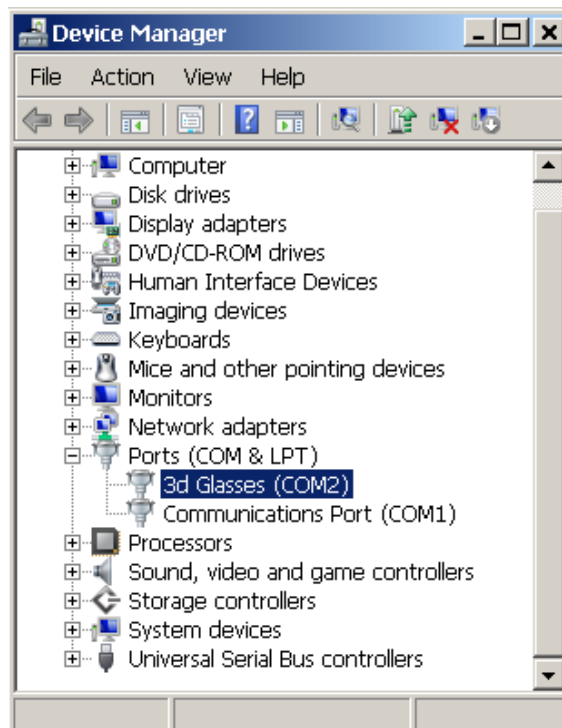
8. Press the “Next” button and start installation. If you receive an error message about digital signature, please ignore it, and select “Install driver software anyway”.



9. Wait till copying is done and files have been installed. If everything was successful, the device will be assigned a virtual COM port with a matching available number i.e. COM2.



10. After finishing installation, go to Control Panel again. Make sure the driver is installed. Yellow sign next to the name of the device will disappear, and it will move to the "Ports COM & LPT" category. Like it shows on the picture below:



Installation now complete.

Now you can install service utility "DFU".

3D stereo photo and 3D video player will receive access to the glasses via USB cable.