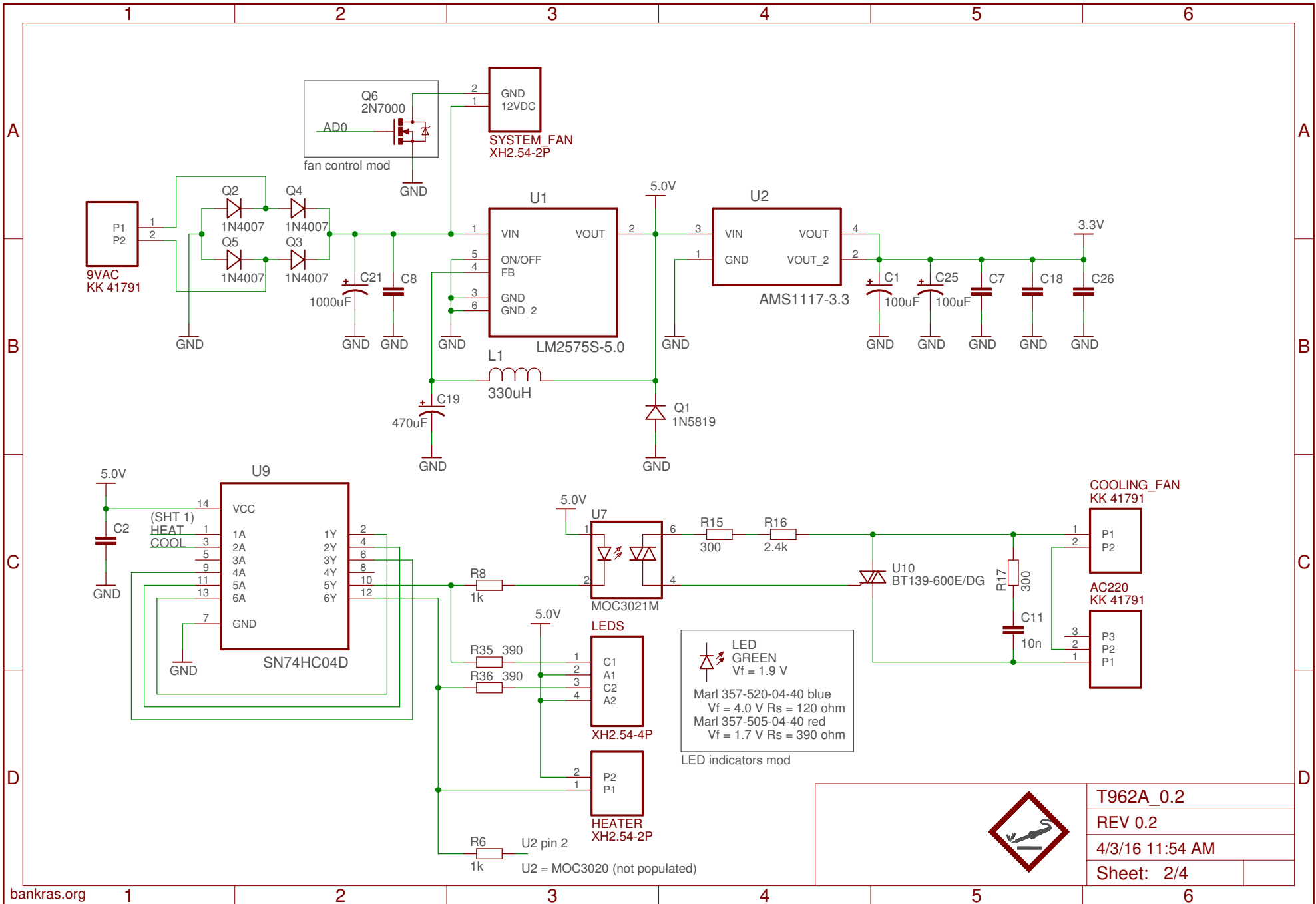


T962A_0.2
REV 0.2
4/3/16 11:54 AM
Sheet: 1/4



LED GREEN
 $V_f = 1.9\text{ V}$

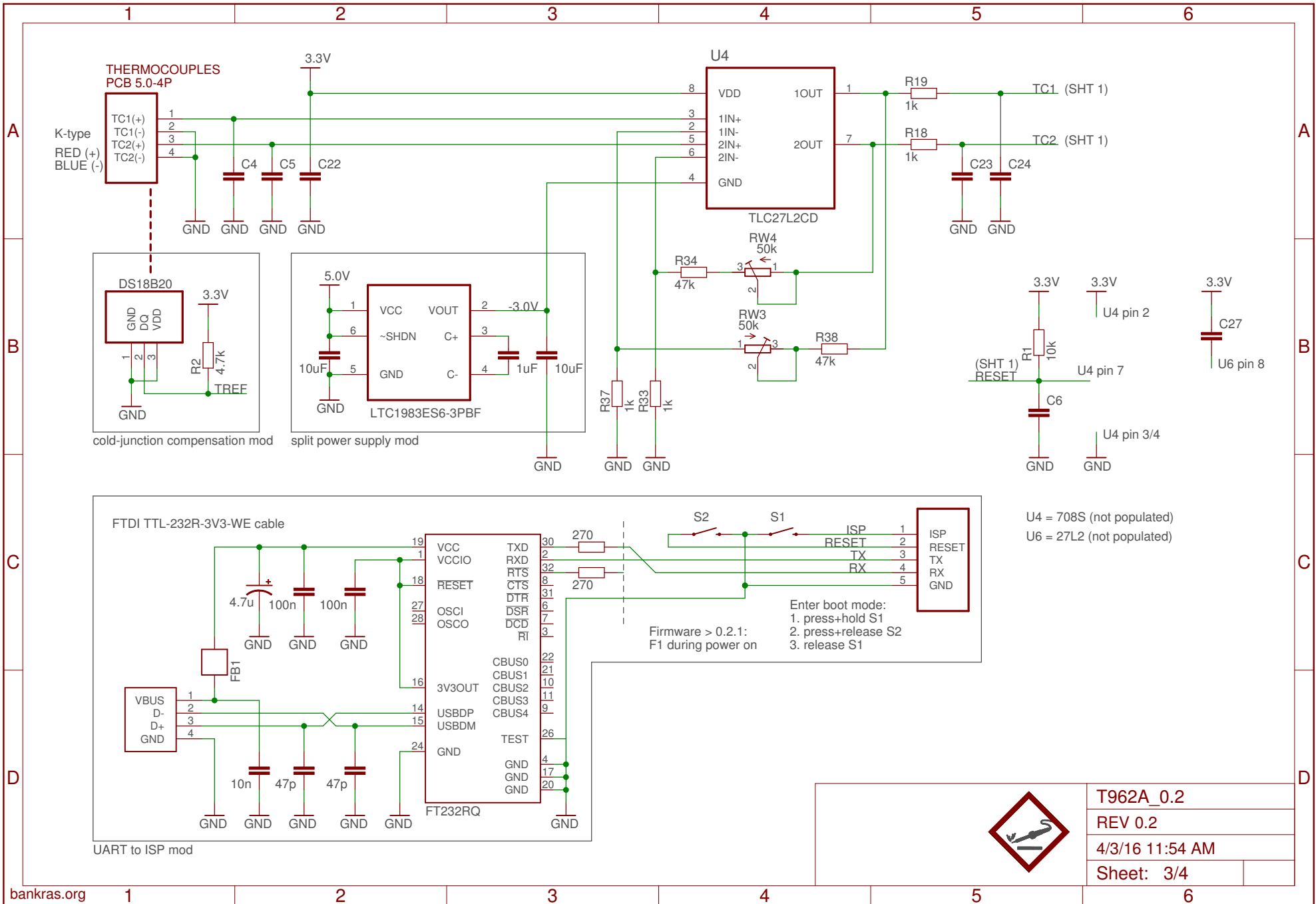
Marl 357-520-04-40 blue
 $V_f = 4.0\text{ V}$ $R_s = 120\text{ ohm}$

Marl 357-505-04-40 red
 $V_f = 1.7\text{ V}$ $R_s = 390\text{ ohm}$

LED indicators mod



T962A_0.2
REV 0.2
4/3/16 11:54 AM
Sheet: 2/4

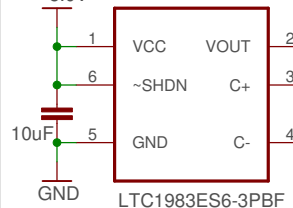


**THERMOCOUPLES
PCB 5.0-4P**

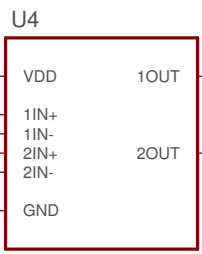
K-type
RED (+)
BLUE (-)

DS18B20

cold-junction compensation mod

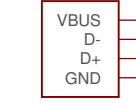


split power supply mod

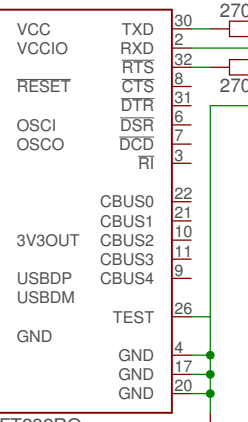


U4
TLC27L2CD

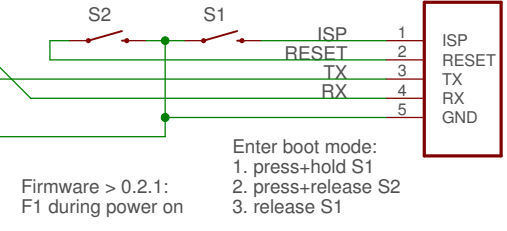
FTDI TTL-232R-3V3-WE cable



UART to ISP mod



FT232RQ



U4 = 708S (not populated)
U6 = 27L2 (not populated)

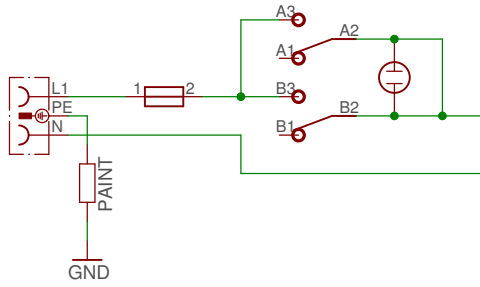


T962A_0.2
REV 0.2
4/3/16 11:54 AM
Sheet: 3/4

1 2 3 4 5 6

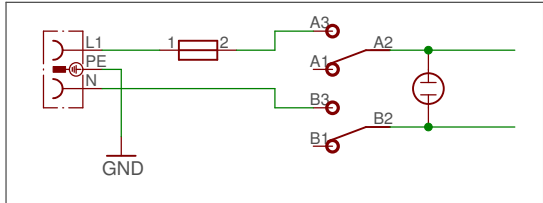
A

A



B

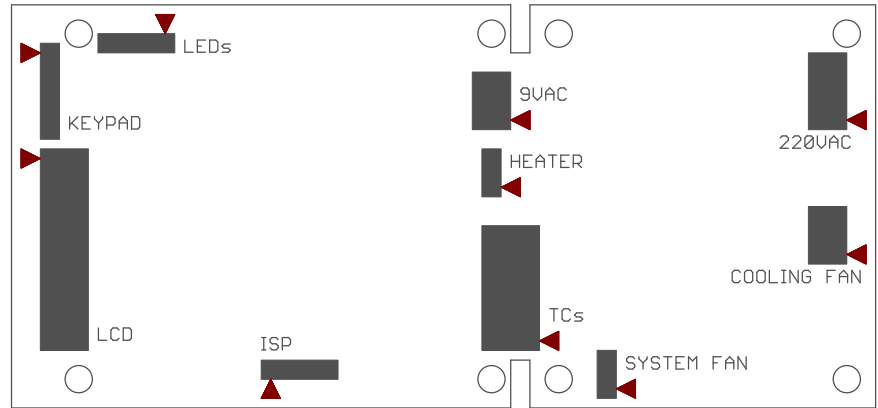
B



power line fix

C

C



D

D



T962A_0.2
REV 0.2
4/3/16 11:54 AM
Sheet: 4/4